



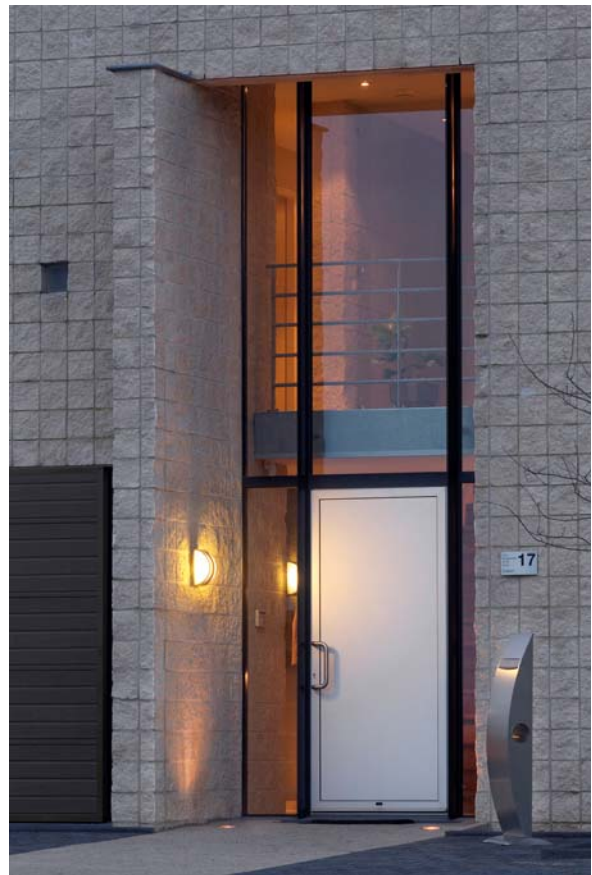
## Contemporary Outdoor Wall Lights for the Modern Home

Many of us want to have our homes looking right up to date and spend time and money on projects to that end. One area that needs to be considered is the inclusion of contemporary [outdoor wall lights](#) to ensure that the exterior of a property has the very latest look, now that gardens share as much importance as interior design for homes.

Television programmes, magazines and displays in shops give great ideas for ways to improve the appearance of your house. Furniture and soft furnishings have always followed trends and outside in the garden lighting too plays a major role in any effective design. Contemporary outdoor wall lights will suit a property that presents a modern look. They will look best if you take in to account the other garden features you have incorporated into your scheme.

Colour, texture and density, a sense of solidity, could all be elements that affect the overall look. It is sensible to have a theme, as this creates a harmonious appearance, though you do not have to stick rigidly to it. Sometime a little eclectic mix puts an owner's personal stamp on a design rather than shipping in and fitting items that look as though they have come straight from a catalogue.

However, to best achieve a neat, modern look the contemporary outdoor wall lights will need to tie in with something else in your outdoor décor plan. Existing elements like wrought iron furniture for example, might make a starting point. The furniture might be painted green and you are unable to find green light fittings. Don't despair, add cushions in a colour that is easily complemented such as white, or black and you will have a natural partner to bring things up to date. Look at the dominant shapes used in your garden features and choose light fitting that will be sympathetic. Curves with curves and straight with straight will present a partnership that will enhance the design.



If you are reluctant to change existing furniture or features, you can opt for subtle recessed lights that will provide excellent illumination with possibilities for amazing lighting techniques so that

even an old water wheel or wheel barrow can be transformed into a modern work of art and make the piece seem more contemporary by its highlighting.

When choosing contemporary outdoor wall lights you will be spoilt for choice regarding colour, shape, up lighting or down lighting options, two directional beams, floodlights, step lights and recessed lights – all available as wall mounted options. The most popular contemporary outdoor wall lights are available in silvery toned colours such as chrome, nickel, stainless steel and aluminium as well as black and white, although there are choices in bronze and copper too.



Porches, patios, courtyards and balconies can all come to life at night and offer you an extra reception or entertaining area when you have them exquisitely lit. Chrome type colours are very easily matched with tubular steel furniture arms, legs and table tops whether they are cushion topped, rattan cane seats or canvas upholstered.