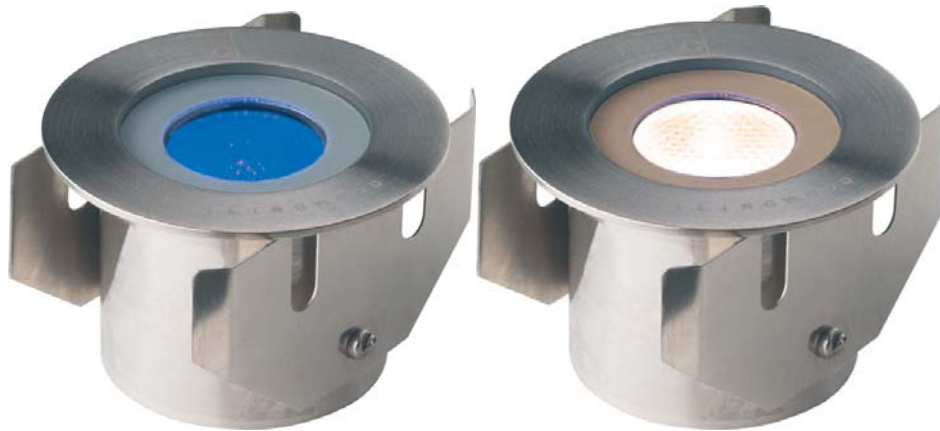




### **ROUND 1 WATT LED GROUND & DECKING LIGHT (GL016)**



- Medium sized ground light
- 316 grade stainless steel construction
- Tough walkover front glass
- Cool glass
- IP68 rated- suitable for zone zero and one in bathrooms
- Dimensions: Diameter - 60mm, Depth - 39mm
- Cutout required: 50mm
- 100,000 hour lamp life
- Colours available Cool White, Blue, Red, Amber and Green

This ground light can be mounted into wooden decking or into concrete, if mounting in concrete we would recommend using the concrete installation tube listed in the options below at a cost of £15.00 each +vat.



Concrete installation tube

This decking light is designed to be used exclusively with the PLU/350 power supply unit (cost £23.90 each +vat), each power supply unit will run up to 9 lights. The PLU/350 power supply as it is should be mounted indoors or can be fitted outside using the waterproof enclosure.



PLU/350 Power supply



PLU/350 waterproof enclosure

Another option which makes wiring in the elements safer and much easier is using the JB2 junction box this is a fully waterproof enclosure that has 1 in point and up to lighting outlets depending on whether other JB2 boxes are to be connected.



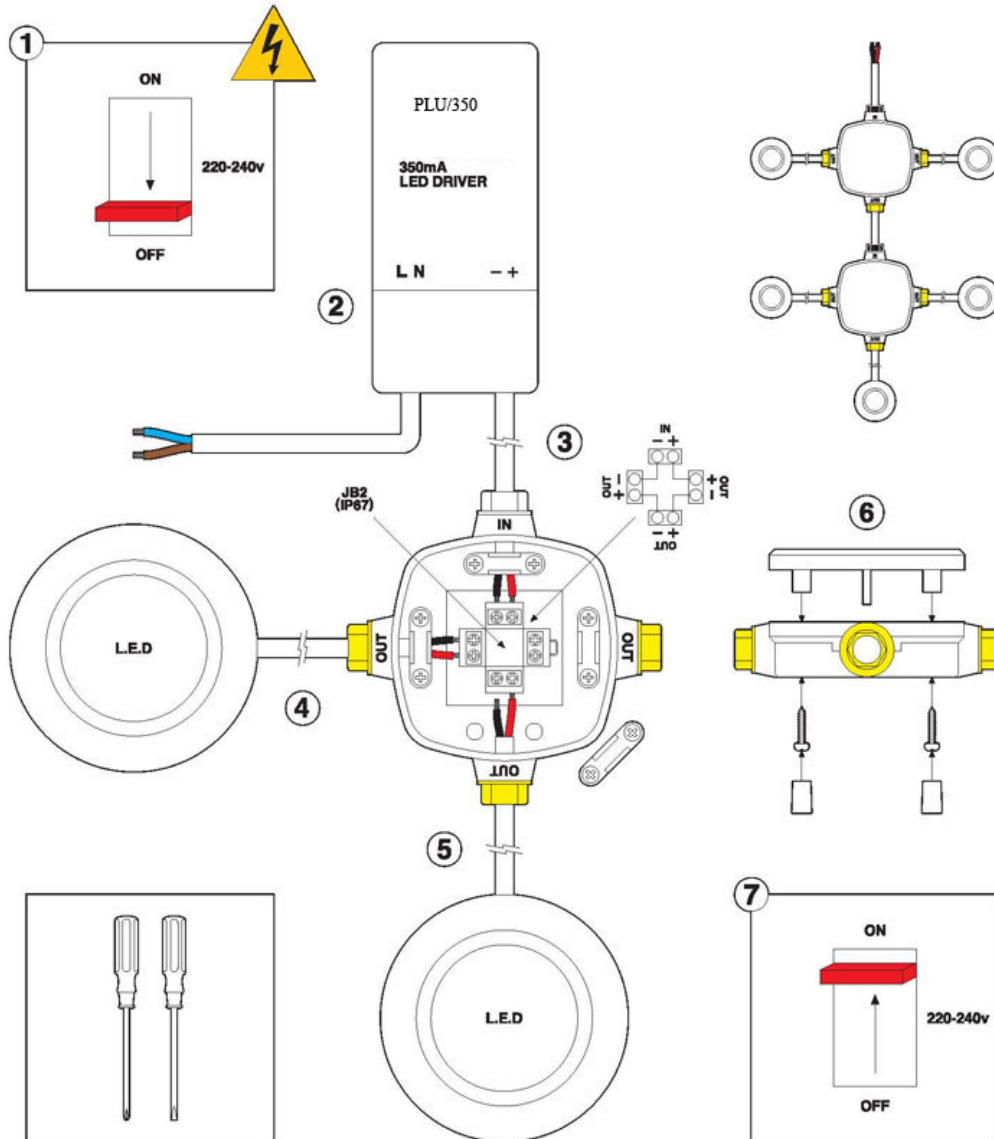
JB2 Junction box

How many PLU/350 power supplies will I need?

No. of Lights	No. of PLU/350 Power supplies
1	1
2	1
3	1
4	1
5	1
6	1
7	1
8	1
9	1
10	2
11	2
12	2
13	2
14	2
15	2
16	2
17	2
18	2
19	3
20	3
21	3
22	3
23	3
24	3
25	3
26	3
27	3

# SERIES LED/JB2 (IP67) WIRING INSTRUCTIONS

GL040/41, GL050/51, GL016, GL021,  
SLO30 & BOL LED 1



Ace Lamps Ltd, Unit 18, New Forest Enterprise Centre, Chapel Lane  
Totton, Southampton, Hants, SO40 9LA Email: sales@acelamps.com